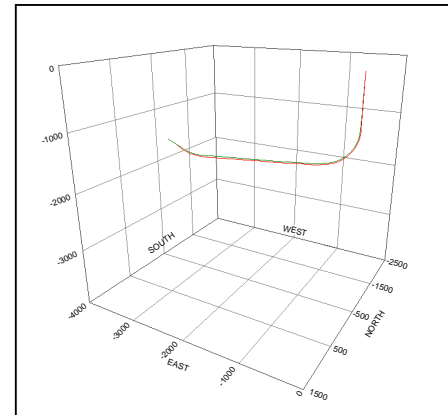


COLT – Case Studies Well Test Details

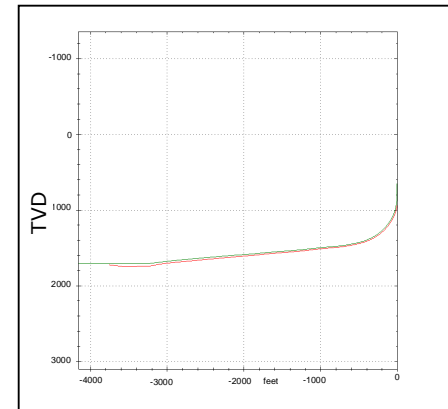
COLT is ready for commercial use and its performance and capabilities have been proven in tests, with a successful shale play drilled in Michigan, US. This was achieved with very accurate precision and provides positive evidence that the tool can be successfully used in commercial ventures. The success of this test is clearly demonstrated by the fact that the customer offered a further 2 commercial wells to drill following the test completion.

The key results and details of the drilling operation are shown below:

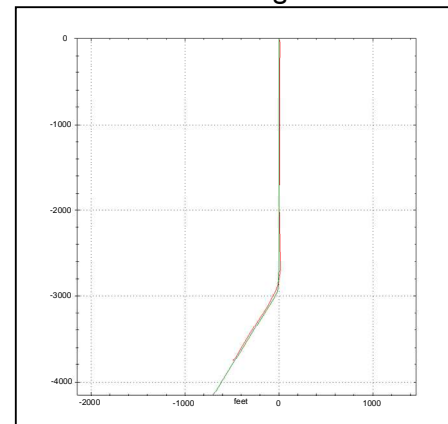
Measured Depth	–	5090'
True Vertical Depth	–	1720'
Hole Diameter	–	4 3/8"
Bottom Hole Pressure	–	750psi approx
Bottom Hole Temperature	–	28°C
Build Rate	–	20°/100'
Drilling fluid	–	Initially Brine, then 20% Nitrogen, then 40% Nitrogen
Formation	–	Antrim Shale
Objective	–	Produce Shale Gas
Distance Drilled	–	1186' (started at 3858', stopped at 5037')



3-D Well Plot



Northings



Plan View

Additional Operations

2008: During the operation of an existing Coiled Tubing Drilling project in Michigan, the incumbent drilling team and tool were unable to progress further than 2350ft (MD). The proposed reason for this is a combination of deviated path, BHA length and / or mud motor selection. The COLT tool replaced the existing one and carried out a survey run before finishing the required drilling, which included extending the lateral and drilling the sump using Air Foam.

2002 – Present: An early version of the COLT drilling tool was developed for the Geophysical Surveying Company, to conduct field tests in order to obtain sub-sea geological information. AnTech was selected after the company had carried out an extensive world-wide investigation of the potential options and the two companies have developed an excellent working relationship. The scope of the project has since been extended and now also includes the drilling of the identified boreholes and over 2000 hours of operations have been carried out.

**AnTech™**

For further information contact:

AnTech Ltd
Unit 7, Newbery Centre,
Airport Business Park,
EXETER, EX5 2UL
UK

Tel: +44 (0) 1392 440300 Fax: +44 (0) 1392 440301
email: antech@antech.co.uk

US & Canada
Tel: 1 800 789 7515 Fax: 1 281 754 4333

www.antech.co.uk

©Copyright AnTech Ltd. All rights reserved 2009

About AnTech Ltd

AnTech specialises in the design and manufacture of innovative products for the international upstream oil and gas industries. The company is known throughout the world of oil and gas exploration for its range of award winning coiled tubing tools and related permanent completion products that also promote safety, efficiency and cost effectiveness.